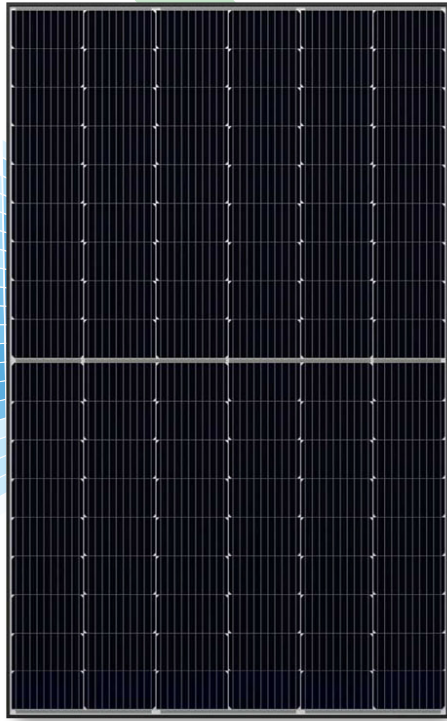


◀ BIFACIAL ▶



# DESERV® EXTREME 108 385 WP - 415 WP



\*Module image for representation purpose only



## SAFE

- IP68 Junction box
- 10 YEARS 10 years of product warranty
- 25 YEARS 25 Years of power output warranty
- 1500 Vdc



## RELIABLE

- Extreme weather resilience
- Windspeed - 2400 Pa, Snowload - 5400 Pa
- Highly reliable anti-reflective coated glass



## HIGH PERFORMANCE

- PID resistant
- Superlative performance in low light
- High power density
- Positive power tolerance

## World-class products, Made in India

- Smart:** High module efficiency with 108X half-cut Mono crystalline Bi-facial PERC Solar Cells
- Modern:** Processed on state-of-the-art technology production lines
- Dependable:** Use of highest quality raw materials coupled with rigorous in-house testing
- Versatile:** Suitable for Utility, Rooftop, and other general applications

### Certifications:

- IEC Compliant
- IMS Certified Company - ISO 9001: 2015
- OHSAS 45001: 2018
- EMS - ISO 14001: 2015
- Independently audited by SOLARBUYER



RenewSys is the first integrated manufacturer of Solar PV Modules and its key components - Encapsulants (EVA and POE), Backsheets and Solar PV Cells. We have a global presence with offices in India, Mauritius, Nigeria, South Africa, Singapore, UAE, representatives in Europe, USA, Mexico, and an evolving distributor network.

**Registered Office:** Unit No. 607, 6th Floor, Trade Center, Bandra-Kurla Complex, Bandra East, Mumbai - 400 051, Maharashtra, India.

**Factory:** Plot No. E-141, Additional Patalganga MIDC Industrial Area, Village - Karade Khurd, Taluka Panvel, District Raigad - 410 206, Maharashtra, India.

**Factory:** Plot No.6, Survey # 114/P, Srinagar Village, Maheshwaram Mandal, Dist - Rangareddy, Hyderabad - 501 359, Telangana, India.

Performance under standard test conditions (1000w/m<sup>2</sup>, AM 1.5, 25 °C)

DESERV Extreme 108 Bi-Facial Gain @Different Albedo (%)												
	Pm (Wp)	Vmp (V)	Imp (A)	Voc (V)	Isc (A)	Efficiency (%)	Pm (Wp)	Vmp (V)	Imp (A)	Voc (V)	Isc (A)	Efficiency (%)
Front @STC	<b>385</b>	31.41	12.27	37.04	12.9	19.58	<b>390</b>	31.65	12.34	37.08	13.07	19.84
5%	404.25	31.41	12.87	37.04	13.50	20.56	409.5	31.65	12.94	37.08	13.67	20.83
10%	423.5	31.41	13.48	37.04	14.11	21.54	429	31.65	13.55	37.08	14.28	21.82
20%	462	31.41	14.71	37.04	15.34	23.50	468	31.65	14.79	37.08	15.52	23.81
Front @STC	<b>400</b>	31.96	12.54	37.44	13.2	20.35	<b>405</b>	32.08	12.65	37.67	13.3	20.60
5%	420	31.96	13.14	37.44	13.80	21.36	425.25	32.08	13.26	37.67	13.91	21.63
10%	440	31.96	13.77	37.44	14.43	22.38	445.5	32.08	13.89	37.67	14.54	22.66
20%	480	31.96	15.02	37.44	15.68	24.42	486	32.08	15.15	37.67	15.80	24.72
Front @STC	<b>410</b>	32.2	12.74	37.9	13.37	20.86	<b>415</b>	32.36	12.83	38.14	13.47	21.11
5%	430.5	32.2	13.37	37.9	14.00	21.90	435.75	32.36	13.47	38.14	14.11	22.17
10%	451	32.2	14.01	37.9	14.64	22.94	456.5	32.36	14.11	38.14	14.75	23.22
20%	492	32.2	15.28	37.9	15.91	25.03	498	32.36	15.39	38.14	16.03	25.33

Physical Parameters	
No. of cells	108
Module dimension (mm)	1729 X 1137 (± 2)
Module thickness (mm)	35
Approximate weight (kg)	21.7

NOCT (Wp) at 45 ± 2 °C @800 W/m <sup>2</sup>	385	390	395	400	405	410	415
Pmax (W)	286.53	290.25	293.97	297.69	301.41	305.13	308.86
Max. power voltage (Vmp), V	28.73	28.95	29.10	29.23	29.34	29.45	29.60
Max. power current (Imp), A	9.99	10.04	10.12	10.21	10.30	10.37	10.44
Open circuit voltage (Voc), V	34.44	34.48	34.62	34.81	35.02	35.23	35.47
Short circuit current (Isc), A	10.54	10.68	10.75	10.78	10.87	10.92	11.00

Bi-faciality factor: 70 ± 5%

Operating Conditions	
Temperature, °C	-40 to +85
Max. system voltage, Vdc	1500
Hail impact velocity, m/sec	23
Max. surface load capacity, Pa	5400
Max. wind speed capacity, Pa	2400
Series fuse rating	30A

Mechanical Characteristics	
Cable	No. 12 AWG, 4mm <sup>2</sup> , (300mm Standard)
PV Connectors	MC4 Compatible
Frame	Anodized Aluminum Alloy
Junction box	IP68 Split junction box with 3 bypass diodes
Glass	3.2 mm Thick low iron tempered

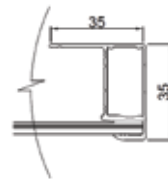
Cell Temperature Coefficient	Bi-Facial
Open circuit voltage	-0.2588 % / °C
Short circuit current	+0.0733 % / °C
Peak power	-0.3287 % / °C

Test uncertainty for Pmax ± 3%

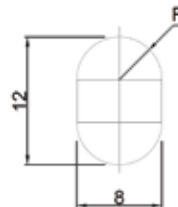
Bi-facial gain subject to mounting structure specifications and albedo % of ground

- Please refer to the installation manual for detailed information.

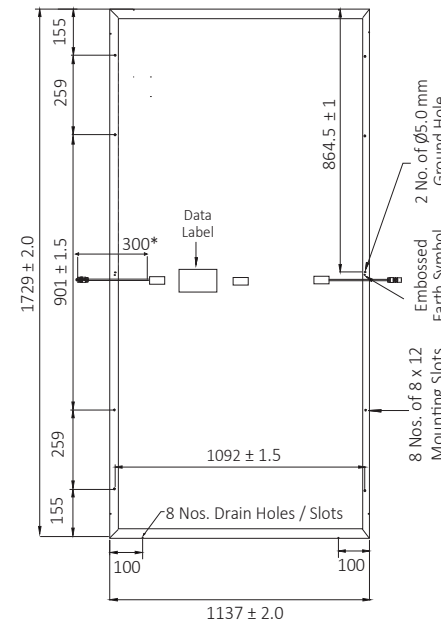
Frame Cross Section



Mounting Hole

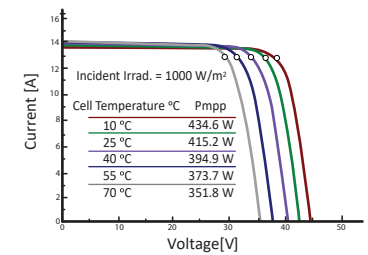


Module Dimension Diagram (mm)



IV Curves

Cell temperature sensitivity chart



Incident irradiance sensitivity chart

